

Sapere Art is Proud to Present this Special Exhibition

# Open Air, Open Waters

## The Art of Kathleen Newman

SAPERE ART  
INTUITIVE WORKS  
Artist's Studio and Gallery at the Flat Iron Arts Bldg

**KATHLEEN NEWMAN**  
"OPEN AIR, OPEN WATERS"



"MARK ROUNDING", 12" X 12", 2009, PASTEL ON PAPER

**OPENING MARCH 5, 2010**  
6:00 PM - 10:00 PM  
THROUGH MARCH 26

FLAT IRON ARTS BLDG. STUDIO 341  
1579 N. MILWAUKEE AVE  
CHICAGO, IL 60622

SAPEREART.COM (312) 208-1504

To discuss this artist and verify inventory in the gallery, contact [GARY@SAPEREART.COM](mailto:GARY@SAPEREART.COM) or call (312) 208-1504

**SAPERE ART**  
INTUITIVE WORKS  
Gallery of Art and Artists Studio

[WWW.SAPEREART.COM](http://WWW.SAPEREART.COM)  
[WWW.FACEBOOK.COM/SAPEREART](http://WWW.FACEBOOK.COM/SAPEREART)

STUDIO 341  
FLAT IRON ARTS BUILDING  
1579 N. MILWAUKEE AVE  
CHICAGO, IL 60622  
(312)208-1504  
[SAPERE@SAPEREART.COM](mailto:SAPERE@SAPEREART.COM)

Sapere Art is Proud to Present this Special Exhibition

# Open Air, Open Waters

## The Art of Kathleen Newman

As a sailor and an artist, I am mesmerized by watching water. The movement of water and the effects of light on its surface inspire me to try and capture the mood of the day. The light of the sky reflecting on the surface of the water plays against the color of water in the depth and shadows of the waves. These small paintings are my attempts to capture that reflective interplay as well as represent our human interaction as we play on the surface.

Kathleen Newman, February 2010



*"On Course"*



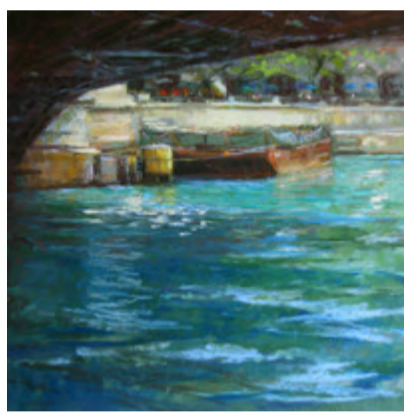
*"In Like a Lion"*



*"Winter Flight"*



*"A New Day"*



*"Under The Michigan Ave Bridge"*



*"My Blue Heaven"*



*"Mark Rounding"*



*"Morning Harbor"*



*"Late in the Day, Monroe Harbor"*



*"Still"*



*"Sun Rises"*

### **Additional Gallery Inventory of this Artist's Works**



*"Wired"*



*"Daily Line Up"*



*"Afternoon Mood"*



*"Last Sunday"*

● Under Work = Not Available/Sold.

To discuss this artist and verify inventory in the gallery, contact [GARY@SAPEREART.COM](mailto:GARY@SAPEREART.COM) or call (312) 208-1504

Sapere Art is Proud to Present this Special Exhibition

# Open Air, Open Waters

## The Art of Kathleen Newman

### **The More You Look the More You See: The Art of Kathleen Newman**

By: Krystal Baugher

Kathleen Newman sees color in the gray. As a plein air style painter—Newman focuses most of her pastel and oil paintings on nature in its own lighting, including Chicago in all its different moody shades. “Nature has its own color palate, its own wonderful balance,” Chicago-native Newman says, “Nature has taught me to see and simplify; to organize the value patterns, shapes, edges and color.” Her new series “Open Air, Open Waters “ will be running March 1 through the 26th at Sapere Art/Intuitive Works. Located amongst 3 dozen artist studios and galleries in the historic Flat Iron Arts Building in the Chicago neighborhood of Wicker Park, Sapere Art specializes in contemporary art from Chicago and Midwest based artists.

“I’m excited to bring the bright lights and colors of wonderful sailing weather into the gallery, especially at the end of a cold winter in Chicago,” Sapere Art/Intuitive Works gallery owner Gary Marr says. The series will focus on one of Newman’s favorite painting subjects, water. As a sailor herself, Newman spends plenty of time in the elements responding to the currents. “Water is my favorite thing to paint because of the lighting and the idea of a body of water and its substance, its reflective and translucent qualities that make it so challenging to capture.”

Newman has been a professional studio artist for twenty years, studying at both the Chicago’s American Academy of Art and The School of the Art Institute. She is skilled not only in oil, but in watercolor and pastel as well. The plein air style takes Newman out of her isolated studio and into the fresh Chicago air. “I just love being outside”, she says, “When you spend three hours on site, the neighborhood walks by you.” People are always coming up to Newman while she’s painting outside and though it can be a distraction she always finds it rewarding. “I love educating the public about what artists do, answering their questions; overall it’s been positive, people like meeting artists.”

“Open Air, Open Waters” opens March 1 and runs through March 26, 2010.

**Opening Reception Friday, March 5, 6 PM-10 PM during the WPB FIRST FRIDAY celebration at the Flat Iron Arts Building in Wicker Park.**

Street or Valet Parking available at any restaurant in the area, usually without patronage of that venue.

To discuss this artist and verify inventory in the gallery, contact [GARY@SAPEREART.COM](mailto:GARY@SAPEREART.COM) or call (312) 208-1504

**SAPERE ART**  
INTUITIVE WORKS  
Gallery of Art and Artists Studio

[WWW.SAPEREART.COM](http://WWW.SAPEREART.COM)  
[WWW.FACEBOOK.COM/SAPEREART](http://WWW.FACEBOOK.COM/SAPEREART)

STUDIO 341  
FLAT IRON ARTS BUILDING  
1579 N. MILWAUKEE AVE  
CHICAGO, IL 60622  
(312)208-1504  
[SAPERE@SAPEREART.COM](mailto:SAPERE@SAPEREART.COM)

# Open Air, Open Waters

## The Art of Kathleen Newman

*"On Course"*



Medium: Pastel on Paper

Dimensions: 12" W X 12" H

\$850.00 Pre-sale available, works delivered upon conclusion of show.

● Under Art = Not Available/Sold

To discuss this artist and verify inventory in the gallery, contact [GARY@SAPEREART.COM](mailto:GARY@SAPEREART.COM) or call (312) 208-1504

**SAPERE ART**  
INTUITIVE WORKS  
Gallery of Art and Artists Studio

[WWW.SAPEREART.COM](http://WWW.SAPEREART.COM)  
[WWW.FACEBOOK.COM/SAPEREART](http://WWW.FACEBOOK.COM/SAPEREART)

STUDIO 341  
FLAT IRON ARTS BUILDING  
1579 N. MILWAUKEE AVE  
CHICAGO, IL 60622  
(312)208-1504  
[SAPERE@SAPEREART.COM](mailto:SAPERE@SAPEREART.COM)

# Open Air, Open Waters

## The Art of Kathleen Newman

*"In Like a Lion"*



Medium: Oil on canvas

Dimensions: 12" W X 12" H

\$800.00 Pre- sale available, works delivered upon conclusion of show.

● Under Art = Not Available/Sold

To discuss this artist and verify inventory in the gallery, contact [GARY@SAPEREART.COM](mailto:GARY@SAPEREART.COM) or call (312) 208-1504

**SAPERE ART**  
INTUITIVE WORKS  
Gallery of Art and Artists Studio

[WWW.SAPEREART.COM](http://WWW.SAPEREART.COM)  
[WWW.FACEBOOK.COM/SAPEREART](http://WWW.FACEBOOK.COM/SAPEREART)

STUDIO 341  
FLAT IRON ARTS BUILDING  
1579 N. MILWAUKEE AVE  
CHICAGO, IL 60622  
(312)208-1504  
[SAPERE@SAPEREART.COM](mailto:SAPERE@SAPEREART.COM)

# Open Air, Open Waters

## The Art of Kathleen Newman

*"Winter Flight"*



Medium: Oil on canvas

Dimensions: 12" W X 12" H

\$800.00 Pre- sale available, works delivered upon conclusion of show.

● Under Art = Not Available/Sold

To discuss this artist and verify inventory in the gallery, contact [GARY@SAPEREART.COM](mailto:GARY@SAPEREART.COM) or call (312) 208-1504

**SAPERE ART**  
INTUITIVE WORKS  
Gallery of Art and Artists Studio

[WWW.SAPEREART.COM](http://WWW.SAPEREART.COM)  
[WWW.FACEBOOK.COM/SAPEREART](http://WWW.FACEBOOK.COM/SAPEREART)

STUDIO 341  
FLAT IRON ARTS BUILDING  
1579 N. MILWAUKEE AVE  
CHICAGO, IL 60622  
(312)208-1504  
[SAPERE@SAPEREART.COM](mailto:SAPERE@SAPEREART.COM)

# Open Air, Open Waters

## The Art of Kathleen Newman

*"A New Day"*



Medium: Pastel on Paper

Dimensions: 12" W X 12" H

\$850.00 Pre- sale available, works delivered upon conclusion of show.

● Under Art = Not Available/Sold

To discuss this artist and verify inventory in the gallery, contact [GARY@SAPEREART.COM](mailto:GARY@SAPEREART.COM) or call (312) 208-1504

**SAPERE ART**  
INTUITIVE WORKS  
Gallery of Art and Artists Studio

[WWW.SAPEREART.COM](http://WWW.SAPEREART.COM)  
[WWW.FACEBOOK.COM/SAPEREART](http://WWW.FACEBOOK.COM/SAPEREART)

STUDIO 341  
FLAT IRON ARTS BUILDING  
1579 N. MILWAUKEE AVE  
CHICAGO, IL 60622  
(312)208-1504  
[SAPERE@SAPEREART.COM](mailto:SAPERE@SAPEREART.COM)

# Open Air, Open Waters

## The Art of Kathleen Newman

*"Under The Michigan Ave Bridge"*



Medium: Pastel on Paper

Dimensions: 12" W X 12" H

\$850.00 Pre-sale available, works delivered upon conclusion of show.

 Under Art = Not Available/Sold

To discuss this artist and verify inventory in the gallery, contact [GARY@SAPEREART.COM](mailto:GARY@SAPEREART.COM) or call (312) 208-1504

**SAPERE ART**  
INTUITIVE WORKS  
Gallery of Art and Artists Studio

[WWW.SAPEREART.COM](http://WWW.SAPEREART.COM)  
[WWW.FACEBOOK.COM/SAPEREART](http://WWW.FACEBOOK.COM/SAPEREART)

STUDIO 341  
FLAT IRON ARTS BUILDING  
1579 N. MILWAUKEE AVE  
CHICAGO, IL 60622  
(312)208-1504  
[SAPERE@SAPEREART.COM](mailto:SAPERE@SAPEREART.COM)

# Open Air, Open Waters

## The Art of Kathleen Newman


*"My Blue Heaven"*



Medium: Oil on canvas

Dimensions: 40" W X 30" H

\$2100.00 Pre- sale available, works delivered upon conclusion of show.

 Under Art = Not Available/Sold

To discuss this artist and verify inventory in the gallery, contact [GARY@SAPEREART.COM](mailto:GARY@SAPEREART.COM) or call (312) 208-1504

**SAPERE ART**  
INTUITIVE WORKS  
Gallery of Art and Artists Studio

[WWW.SAPEREART.COM](http://WWW.SAPEREART.COM)  
[WWW.FACEBOOK.COM/SAPEREART](http://WWW.FACEBOOK.COM/SAPEREART)

STUDIO 341  
FLAT IRON ARTS BUILDING  
1579 N. MILWAUKEE AVE  
CHICAGO, IL 60622  
(312)208-1504  
[SAPERE@SAPEREART.COM](mailto:SAPERE@SAPEREART.COM)

# Open Air, Open Waters

## The Art of Kathleen Newman

*"Mark Rounding"*



Medium: Pastel on Paper

Dimensions: 12" W X 12" H

\$850.00 Pre- sale available, works delivered upon conclusion of show.

● Under Art = Not Available/Sold

To discuss this artist and verify inventory in the gallery, contact [GARY@SAPEREART.COM](mailto:GARY@SAPEREART.COM) or call (312) 208-1504

**SAPERE ART**  
INTUITIVE WORKS  
Gallery of Art and Artists Studio

[WWW.SAPEREART.COM](http://WWW.SAPEREART.COM)  
[WWW.FACEBOOK.COM/SAPEREART](http://WWW.FACEBOOK.COM/SAPEREART)

STUDIO 341  
FLAT IRON ARTS BUILDING  
1579 N. MILWAUKEE AVE  
CHICAGO, IL 60622  
(312)208-1504  
[SAPERE@SAPEREART.COM](mailto:SAPERE@SAPEREART.COM)

# Open Air, Open Waters

## The Art of Kathleen Newman


*"Morning Harbor"*



Medium: Oil on canvas

Dimensions: 12" W X 12" H

\$800.00 Pre- sale available, works delivered upon conclusion of show.

 Under Art = Not Available/Sold

To discuss this artist and verify inventory in the gallery, contact [GARY@SAPEREART.COM](mailto:GARY@SAPEREART.COM) or call (312) 208-1504

**SAPERE ART**  
INTUITIVE WORKS  
Gallery of Art and Artists Studio

[WWW.SAPEREART.COM](http://WWW.SAPEREART.COM)  
[WWW.FACEBOOK.COM/SAPEREART](http://WWW.FACEBOOK.COM/SAPEREART)

STUDIO 341  
FLAT IRON ARTS BUILDING  
1579 N. MILWAUKEE AVE  
CHICAGO, IL 60622  
(312)208-1504  
[SAPERE@SAPEREART.COM](mailto:SAPERE@SAPEREART.COM)

# Open Air, Open Waters

## The Art of Kathleen Newman


*"Late in the Day, Monroe Harbor"*



Medium: Oil on canvas

Dimensions: 16" W X 12" H

\$1000.00 Pre- sale available, works delivered upon conclusion of show.

 Under Art = Not Available/Sold

To discuss this artist and verify inventory in the gallery, contact [GARY@SAPEREART.COM](mailto:GARY@SAPEREART.COM) or call (312) 208-1504

**SAPERE ART**  
INTUITIVE WORKS  
Gallery of Art and Artists Studio

[WWW.SAPEREART.COM](http://WWW.SAPEREART.COM)  
[WWW.FACEBOOK.COM/SAPEREART](http://WWW.FACEBOOK.COM/SAPEREART)

STUDIO 341  
FLAT IRON ARTS BUILDING  
1579 N. MILWAUKEE AVE  
CHICAGO, IL 60622  
(312)208-1504  
[SAPERE@SAPEREART.COM](mailto:SAPERE@SAPEREART.COM)

# Open Air, Open Waters

## The Art of Kathleen Newman

*"Still"*



Medium: Pastel on Paper

Dimensions: 9" W X 12" H

\$700.00 Pre-sale available, works delivered upon conclusion of show.

● Under Art = Not Available/Sold

To discuss this artist and verify inventory in the gallery, contact [GARY@SAPEREART.COM](mailto:GARY@SAPEREART.COM) or call (312) 208-1504

**SAPERE ART**  
INTUITIVE WORKS  
Gallery of Art and Artists Studio

[WWW.SAPEREART.COM](http://WWW.SAPEREART.COM)  
[WWW.FACEBOOK.COM/SAPEREART](http://WWW.FACEBOOK.COM/SAPEREART)

STUDIO 341  
FLAT IRON ARTS BUILDING  
1579 N. MILWAUKEE AVE  
CHICAGO, IL 60622  
(312)208-1504  
[SAPERE@SAPEREART.COM](mailto:SAPERE@SAPEREART.COM)

# Open Air, Open Waters

## The Art of Kathleen Newman

*"Sun Rises"*



Medium: Pastel on Paper/Framed with Museum Glass

Dimensions: 12" W X 12" H

\$850.00 Pre-sale available, works delivered upon conclusion of show.

● Under Art = Not Available/Sold

To discuss this artist and verify inventory in the gallery, contact [GARY@SAPEREART.COM](mailto:GARY@SAPEREART.COM) or call (312) 208-1504

**SAPERE ART**  
INTUITIVE WORKS  
Gallery of Art and Artists Studio

[WWW.SAPEREART.COM](http://WWW.SAPEREART.COM)  
[WWW.FACEBOOK.COM/SAPEREART](http://WWW.FACEBOOK.COM/SAPEREART)

STUDIO 341  
FLAT IRON ARTS BUILDING  
1579 N. MILWAUKEE AVE  
CHICAGO, IL 60622  
(312)208-1504  
[SAPERE@SAPEREART.COM](mailto:SAPERE@SAPEREART.COM)

# Open Air, Open Waters


## The Art of Kathleen Newman

*"Blank"*

Medium:

Dimensions: " W X " H

\$.00 Pre- sale available, works delivered upon conclusion of show.

 Under Art = Not Available/Sold

To discuss this artist and verify inventory in the gallery, contact [GARY@SAPEREART.COM](mailto:GARY@SAPEREART.COM) or call (312) 208-1504

**SAPERE ART**  
INTUITIVE WORKS  
Gallery of Art and Artists Studio

[WWW.SAPEREART.COM](http://WWW.SAPEREART.COM)  
[WWW.FACEBOOK.COM/SAPEREART](http://WWW.FACEBOOK.COM/SAPEREART)

STUDIO 341  
FLAT IRON ARTS BUILDING  
1579 N. MILWAUKEE AVE  
CHICAGO, IL 60622  
(312)208-1504  
[SAPERE@SAPEREART.COM](mailto:SAPERE@SAPEREART.COM)

# Open Air, Open Waters

## The Art of Kathleen Newman

*"Wired"*



Medium: Pastel on Paper/Framed with Museum Glass

Dimensions: 12" W X 12" H

\$1100.00 Pre-sale available, works delivered upon conclusion of show.

● Under Art = Not Available/Sold

To discuss this artist and verify inventory in the gallery, contact [GARY@SAPEREART.COM](mailto:GARY@SAPEREART.COM) or call (312) 208-1504

**SAPERE ART**  
INTUITIVE WORKS  
Gallery of Art and Artists Studio

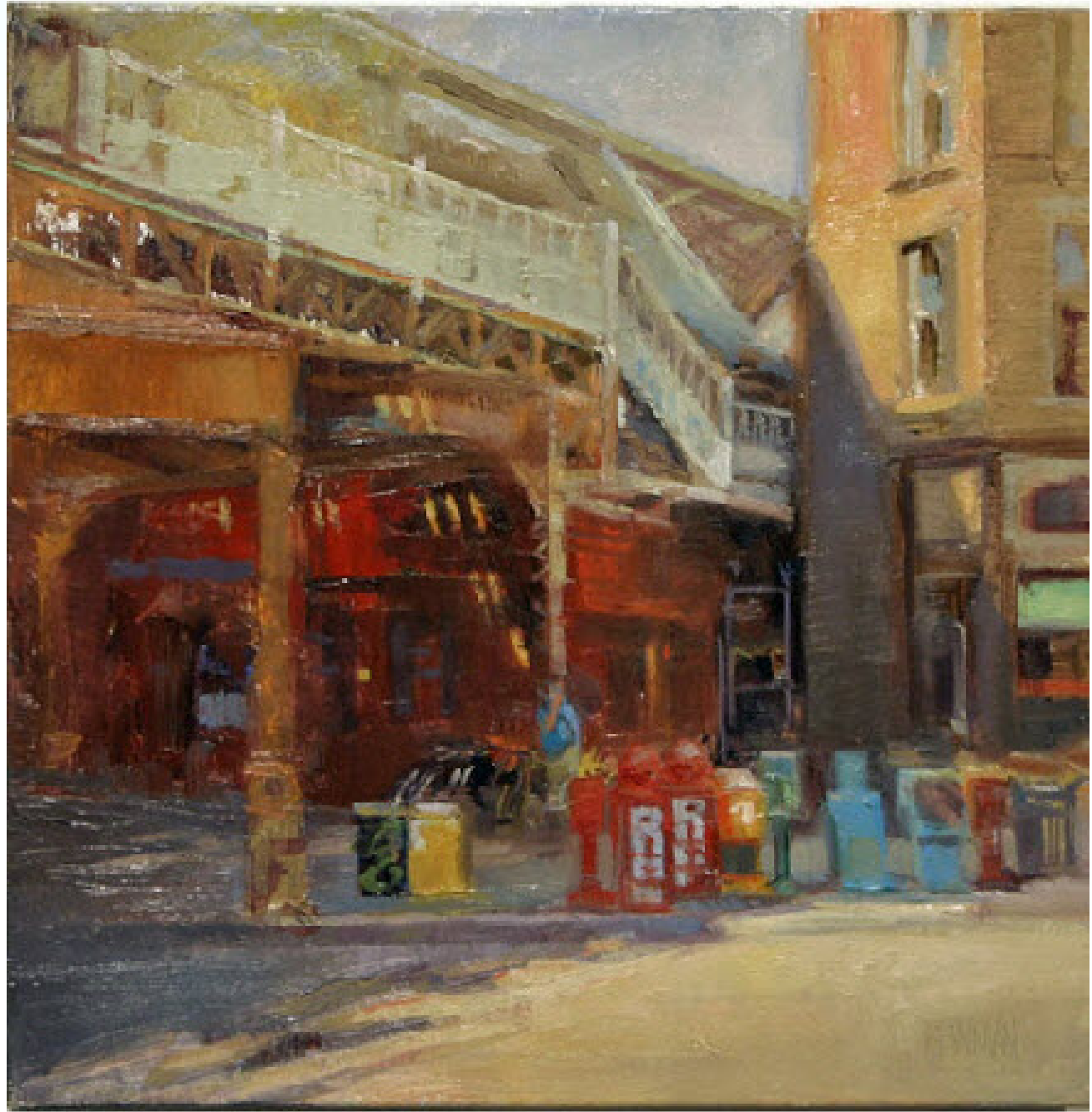
[WWW.SAPEREART.COM](http://WWW.SAPEREART.COM)  
[WWW.FACEBOOK.COM/SAPEREART](http://WWW.FACEBOOK.COM/SAPEREART)

STUDIO 341  
FLAT IRON ARTS BUILDING  
1579 N. MILWAUKEE AVE  
CHICAGO, IL 60622  
(312)208-1504  
[SAPERE@SAPEREART.COM](mailto:SAPERE@SAPEREART.COM)

# Open Air, Open Waters

## The Art of Kathleen Newman

*"Daily Line Up"*



Medium: Oil on Canvas

Dimensions: 12" W X 12" H

\$950.00 Pre- sale available, works delivered upon conclusion of show.

● Under Art = Not Available/Sold

To discuss this artist and verify inventory in the gallery, contact [GARY@SAPEREART.COM](mailto:GARY@SAPEREART.COM) or call (312) 208-1504

**SAPERE ART**  
INTUITIVE WORKS  
Gallery of Art and Artists Studio

[WWW.SAPEREART.COM](http://WWW.SAPEREART.COM)  
[WWW.FACEBOOK.COM/SAPEREART](http://WWW.FACEBOOK.COM/SAPEREART)

STUDIO 341  
FLAT IRON ARTS BUILDING  
1579 N. MILWAUKEE AVE  
CHICAGO, IL 60622  
(312)208-1504  
[SAPERE@SAPEREART.COM](mailto:SAPERE@SAPEREART.COM)

# Open Air, Open Waters

## The Art of Kathleen Newman

*"Afternoon Mood"*



Medium: Charcoal on Mylar/Framed

Dimensions: 14" W X 14" H

\$650.00 Pre- sale available, works delivered upon conclusion of show.

● Under Art = Not Available/Sold

To discuss this artist and verify inventory in the gallery, contact [GARY@SAPEREART.COM](mailto:GARY@SAPEREART.COM) or call (312) 208-1504

**SAPERE ART**  
INTUITIVE WORKS  
Gallery of Art and Artists Studio

[WWW.SAPEREART.COM](http://WWW.SAPEREART.COM)  
[WWW.FACEBOOK.COM/SAPEREART](http://WWW.FACEBOOK.COM/SAPEREART)

STUDIO 341  
FLAT IRON ARTS BUILDING  
1579 N. MILWAUKEE AVE  
CHICAGO, IL 60622  
(312)208-1504  
[SAPERE@SAPEREART.COM](mailto:SAPERE@SAPEREART.COM)

# Open Air, Open Waters

## The Art of Kathleen Newman

*"Last Sunday"*



Medium: Graphite on Mylar/Framed

Dimensions: 10" W X 12" H

\$500.00 Pre- sale available, works delivered upon conclusion of show.

 Under Art = Not Available/Sold

To discuss this artist and verify inventory in the gallery, contact [GARY@SAPEREART.COM](mailto:GARY@SAPEREART.COM) or call (312) 208-1504

**SAPERE ART**  
INTUITIVE WORKS  
Gallery of Art and Artists Studio

[WWW.SAPEREART.COM](http://WWW.SAPEREART.COM)  
[WWW.FACEBOOK.COM/SAPEREART](http://WWW.FACEBOOK.COM/SAPEREART)

STUDIO 341  
FLAT IRON ARTS BUILDING  
1579 N. MILWAUKEE AVE  
CHICAGO, IL 60622  
(312)208-1504  
[SAPERE@SAPEREART.COM](mailto:SAPERE@SAPEREART.COM)